



Whistler

LEATHER

ALL ABOUT
EMBOSSING

whistlerleather.com | info@whistlerleather.com

April 2026

EMBOSSING IS

Embossing (also called plate printing) is where designs from engraved plates are embossed onto the surface of the hides using heat and pressure. With some patterns, a roller is used.

Designs can be produced on a wide selection of colours and finishes.

THINGS TO KNOW:

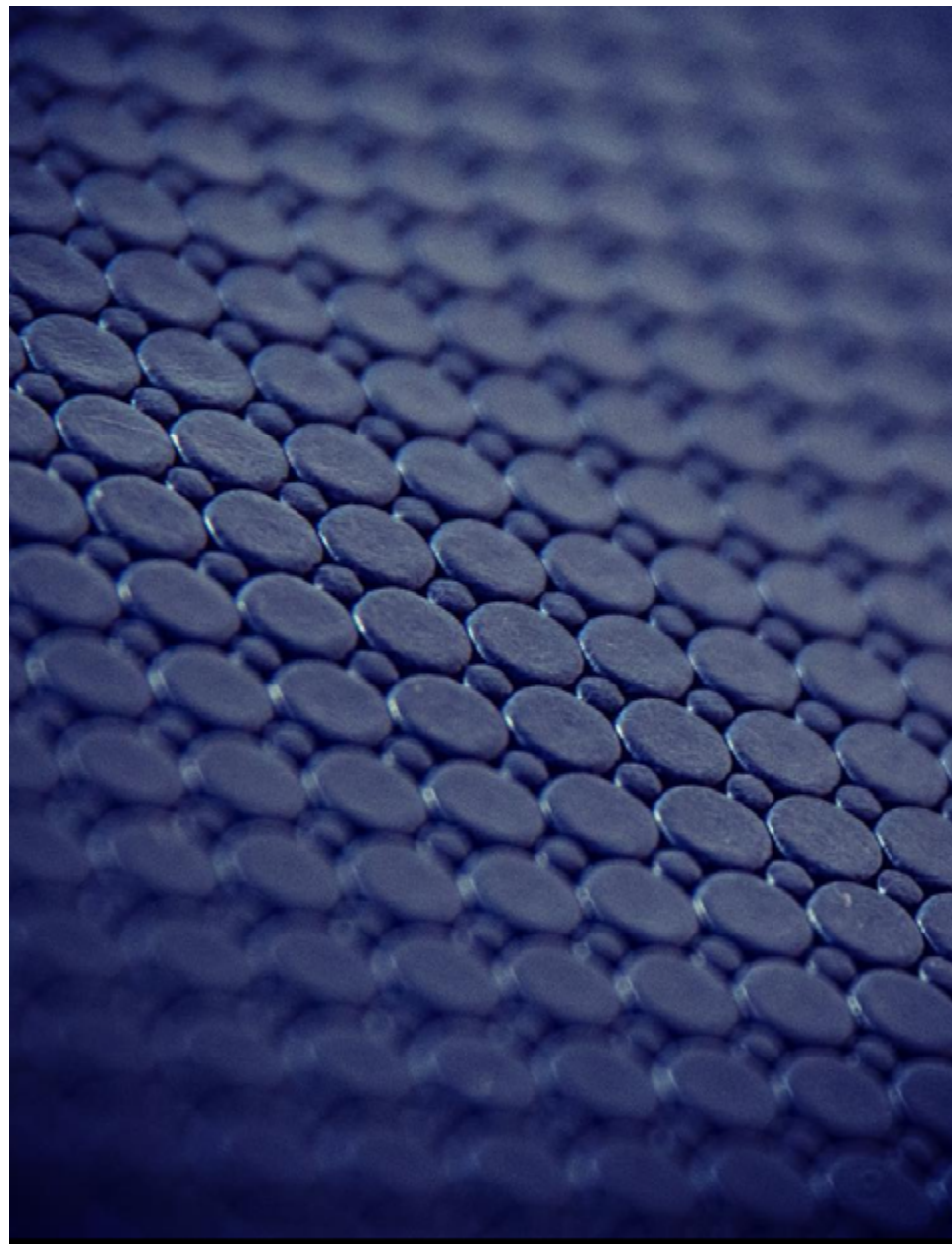
- Panel sizes are required in order to produce in the most suitable way
- With standard embossed hides, there are 4 usable panels. However, based on your panel requirements, we can change the layout of the embossing plate
- Choose between STOCK or MADE-TO-ORDER embossing
- Designs can be produced on a wide selection of colours and finishes
- Aniline and semi-aniline leathers are most suitable for embossing
- Lead time is 1-2 weeks for STOCK embossed products
- Lead time is 2-4 weeks upon approval for all MADE-TO-ORDER embossed with in-stock leather
- For custom colours, allow an additional 4-5 weeks to produce leather

CONSIDERATIONS:

- Junction lines will be visible on the hides
- Plate dimensions are typically 135cm x 95cm
- Panel dimensions are approximately 80cm x 70cm

LEATHERS TO EMBOSS:

Almont	Levanto	Trento
Chamonix	Pamplona	Turoa
Colmar	Pueblo	Venice
Cordoba	Segovia	Verbier
Ithaca	Tangiers	Zaragoza



PLATELINES PLACEMENT

STANDARD PLATE PLACEMENT

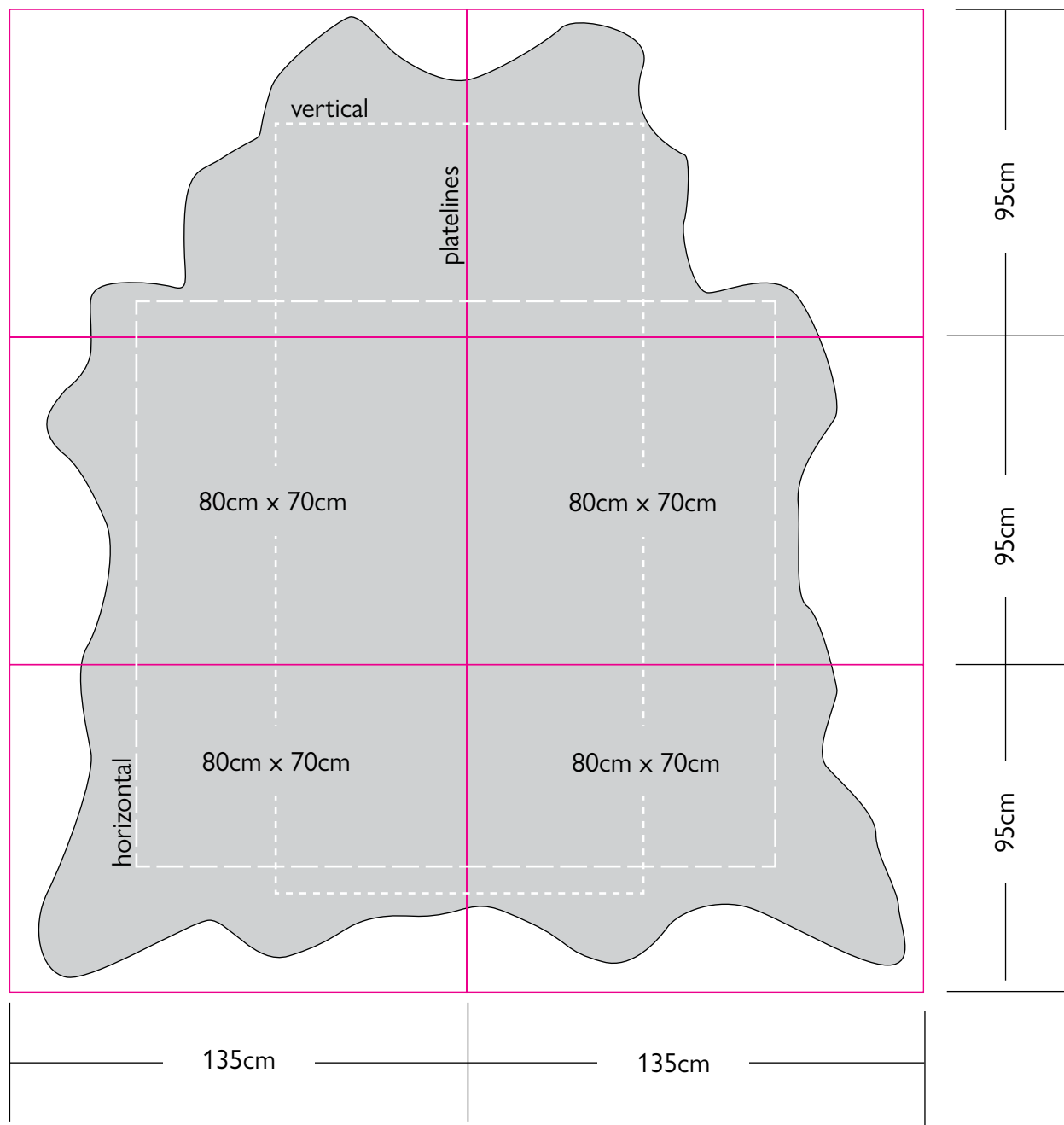
Each hide splits into 4 panels.

Plate dimensions: 135cm x 95cm

Panel dimensions: 80cm x 70cm

Overall horizontal area: 150cm x 160cm

Overall vertical area: 100cm x 200cm



ALTERNATIVE PLATELINES PLACEMENT

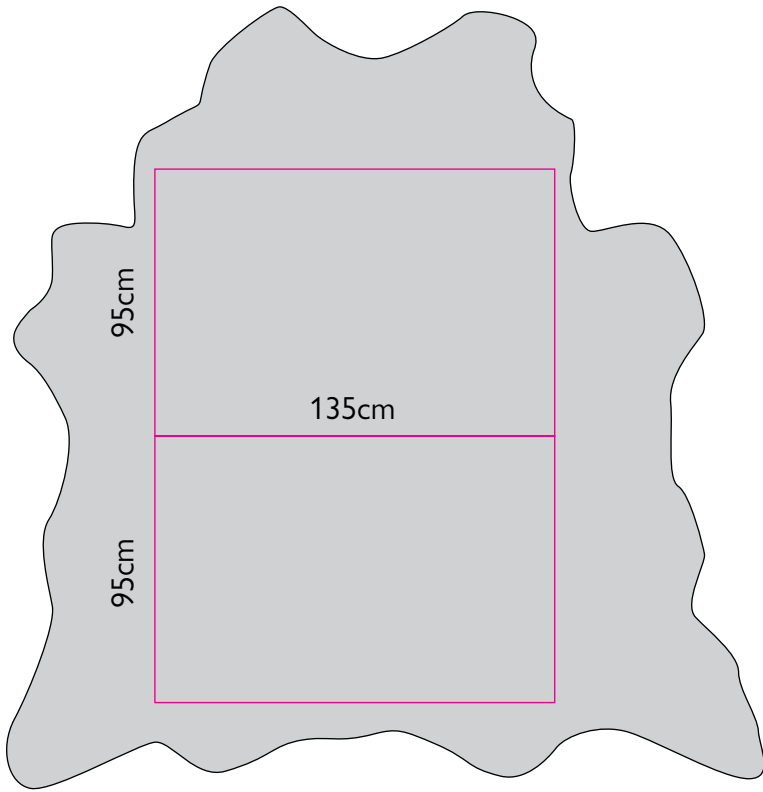
These can be referenced for specific installations as needed.

HORIZONTAL PLATE PLACEMENTS

Each hide splits into 2 panels.

Plate dimensions: 135cm x 95cm

Panel dimensions: 135cm x 95cm

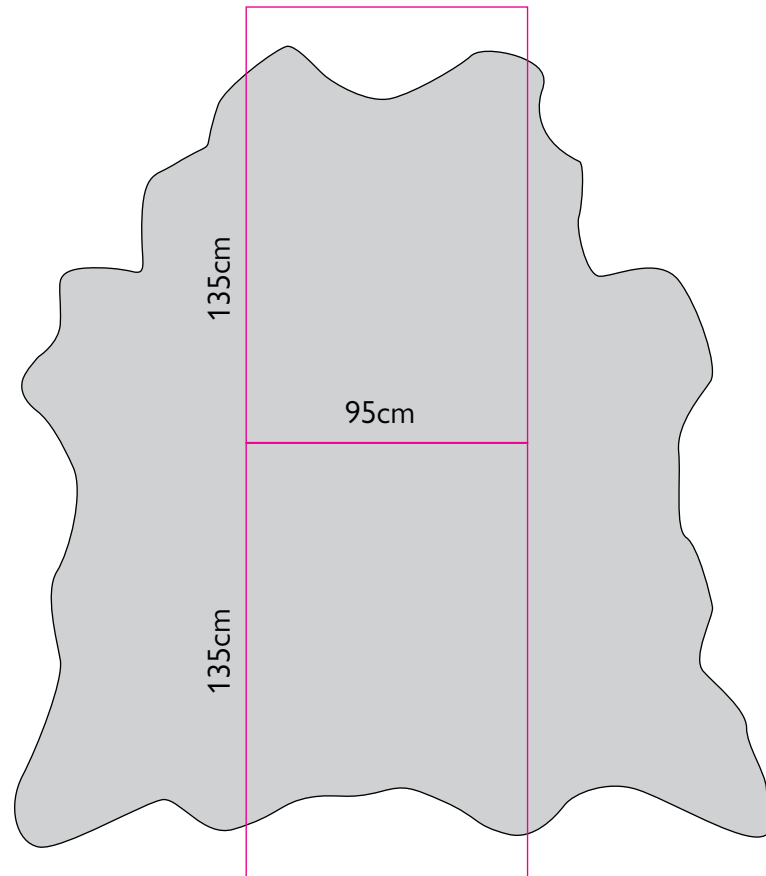


VERTICALLY STACKED PLATE PLACEMENTS

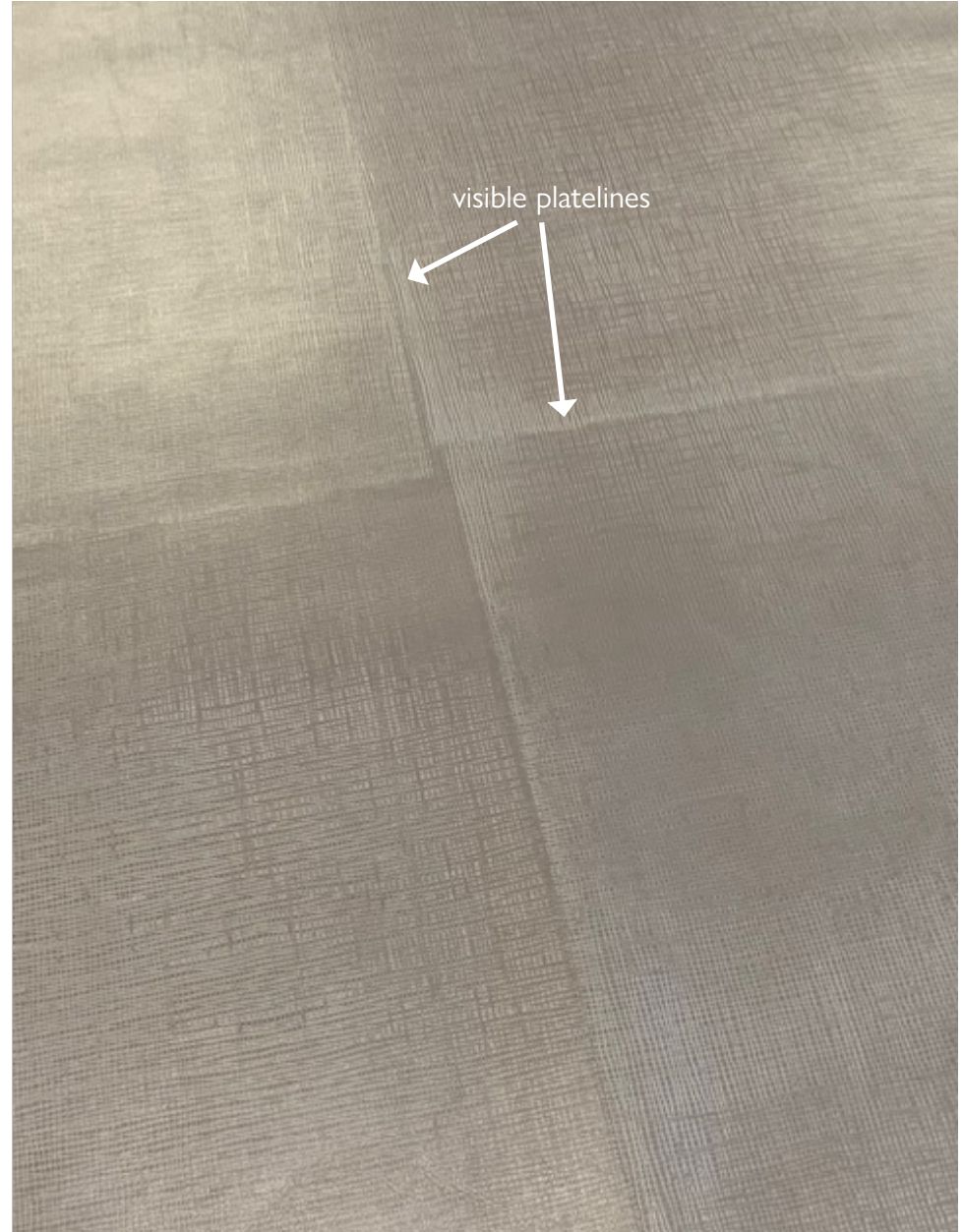
Each hide splits into 2 panels.

Plate dimensions: 95cm x 135cm

Panel dimensions: 95cm x 100cm



PLATELINES





STOCK PRODUCTS

STOCK PRODUCTS

STANDARD PRODUCTS:

Biarritz Milky	Ray Pearl Snow
Cango Chalk	Ray Champagne
Cango Charcoal	Ray Old Bronze
Croco Deep Nile	Ray Black Gold
Hessian Heavy Metal *	Ray Natural
Hessian Smokey Haze*	Ray Taupe
Iguana Stealthy Black	Ray Smoke

THINGS TO KNOW:

- These are considered stock products – these are created with an additional process known as tipping, that creates the two-tone effect
- You will find these products on our colour wall
- Sampling on these products is available
- Cost is noted on the price list

CUSTOMS:

- Custom colouring is available with 1,000 sqft minimum. Simply specify base and tipping colour.
- If sample is required, lead time is 1-2 weeks
- If looking to emboss on a different leather, then let's move to the next section, made-to-order



**Hessian is an exception, all customs require 1,000 sqft minimum*

A close-up photograph of three different types of brown leather. On the left is a pebbled leather with a small, uniform grain. In the center is a crocodile or alligator leather with large, irregular scales and deep grooves. On the right is a cracked leather with a fine, irregular texture. The text "MADE TO ORDER" is centered in white, serif font over the crocodile leather.

MADE TO ORDER

MADE TO ORDER

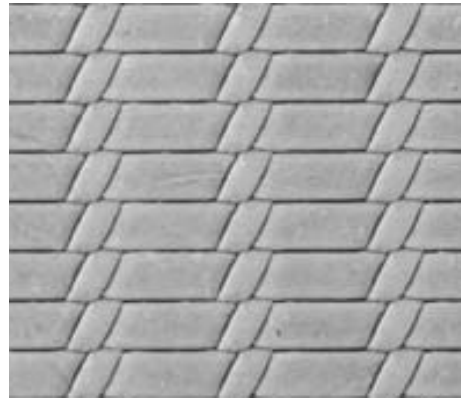
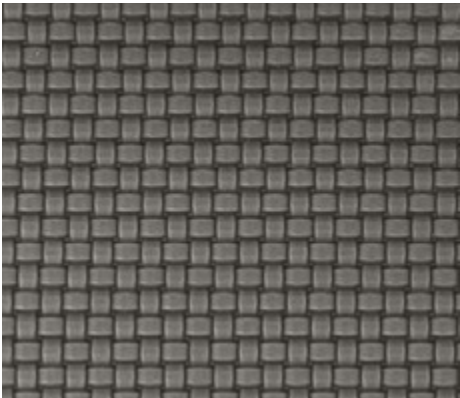
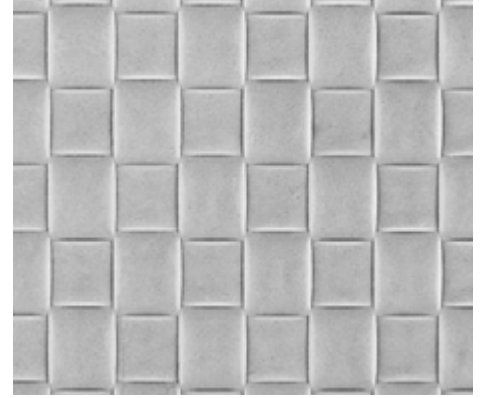
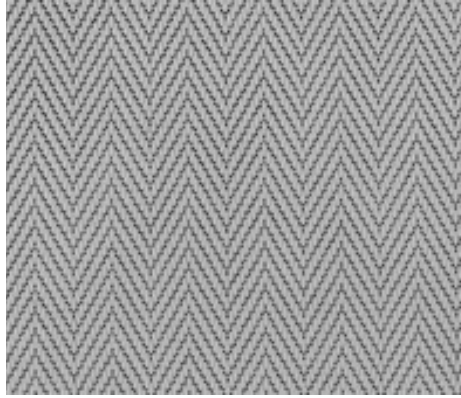
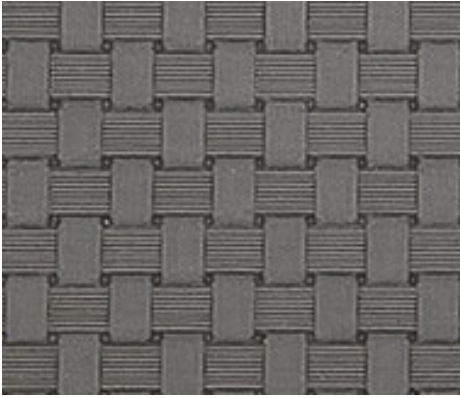
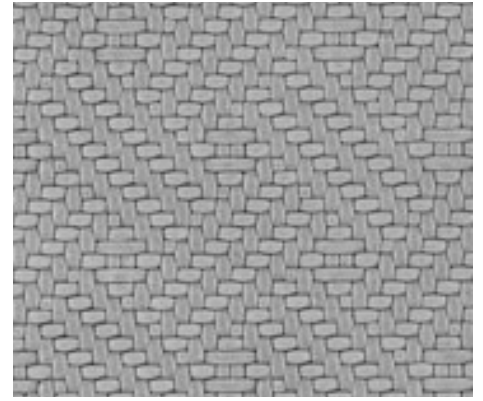
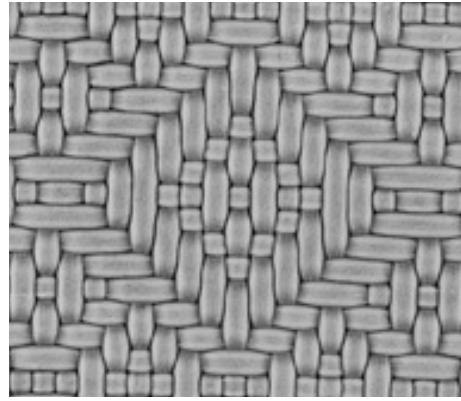
HOW TO ORDER:

- Choose a pattern
- Choose a Whistler leather/colour
- If a sample is required, lead time is 2-4 weeks + £40.00 sample fee
- Production lead time is 2-4 weeks upon approval
- To calculate cost: leather cost per sqft + emboss cost per sqft
- If looking for something other than what you see, there are thousands of patterns available to us. If you don't see it, we can find it.
- 1 hide minimum

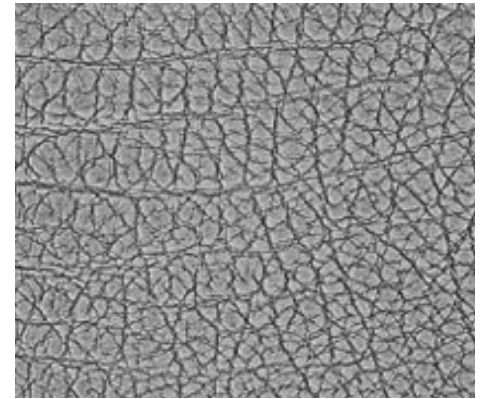
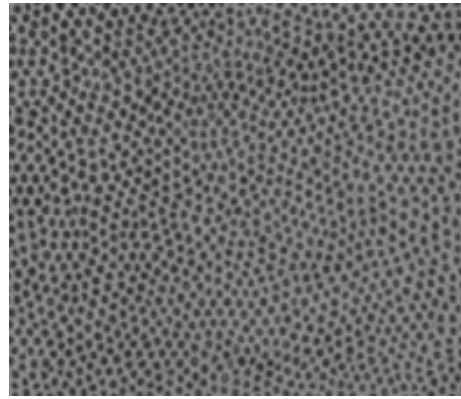
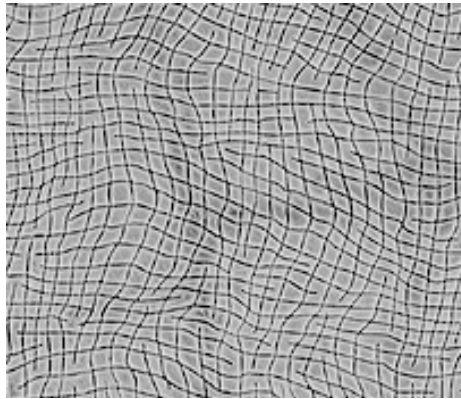
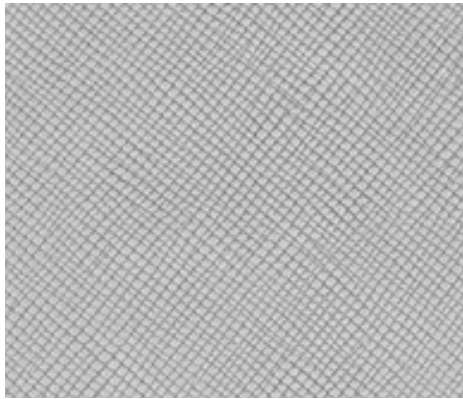
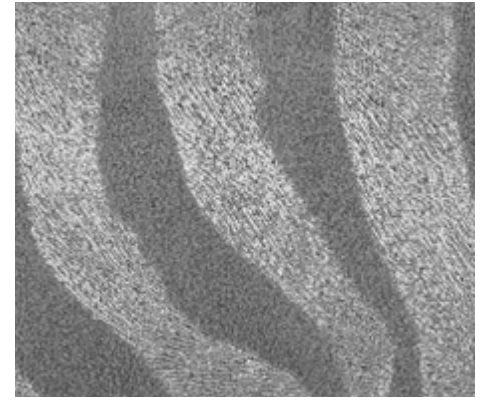
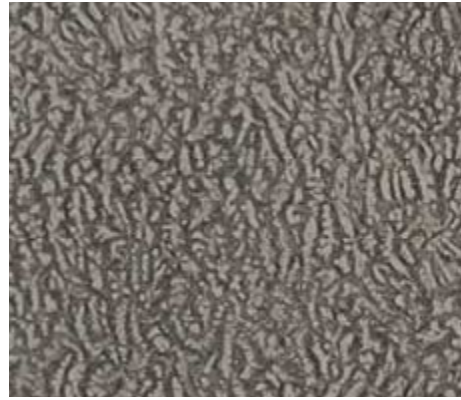
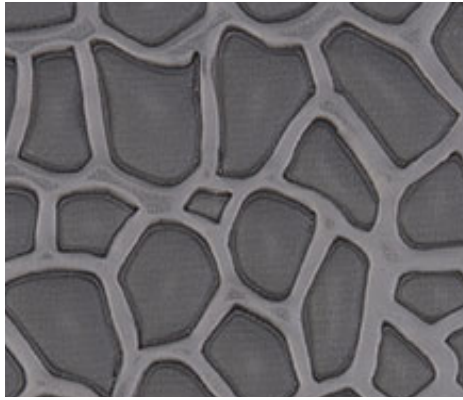
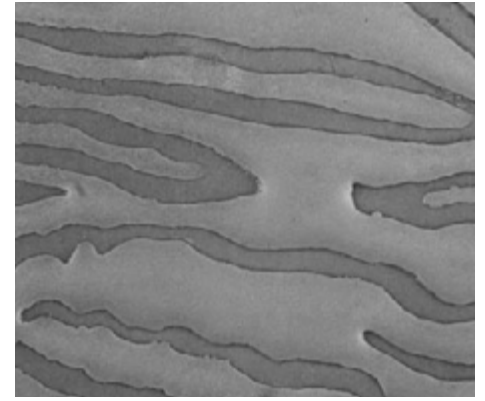
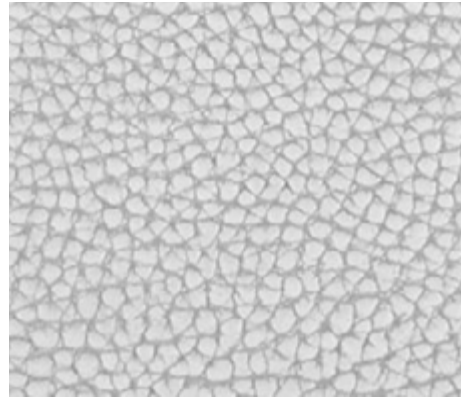
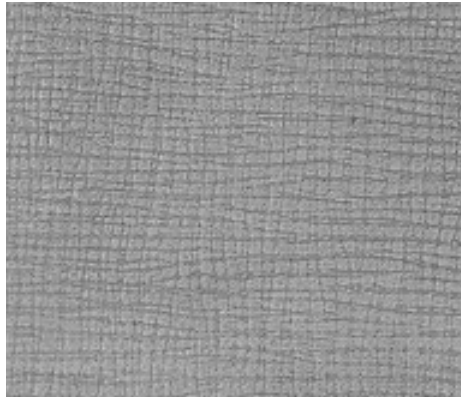
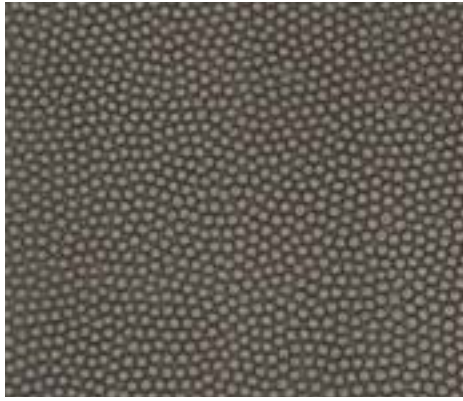


This is only a small selection of what we can source for you.

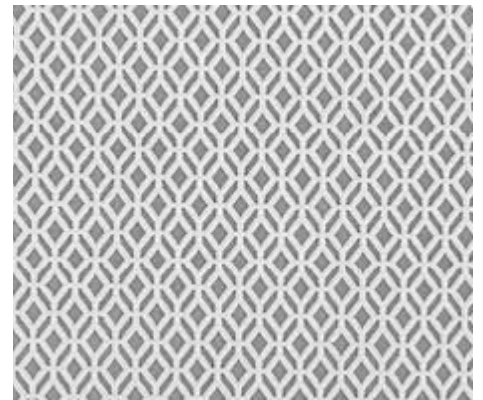
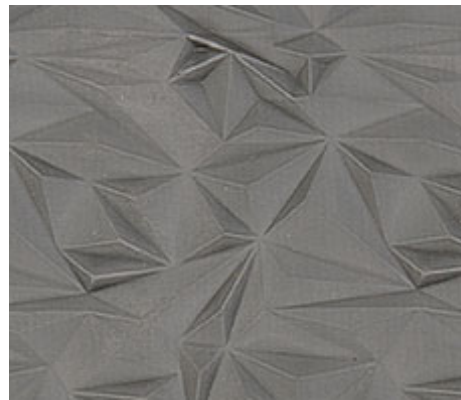
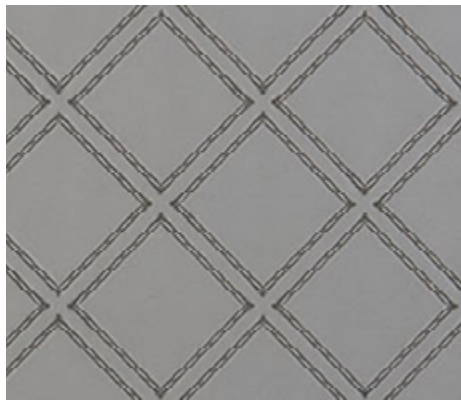
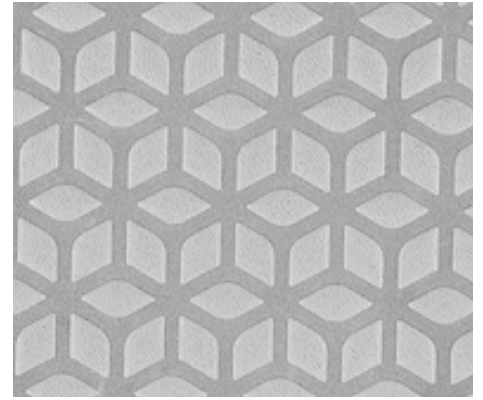
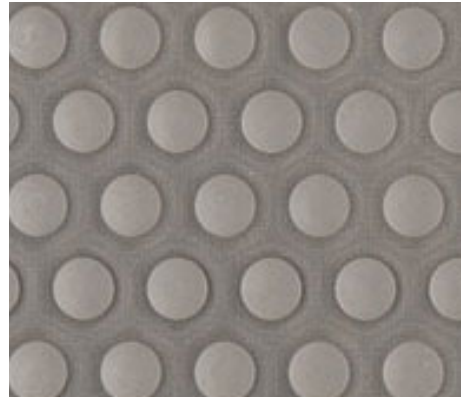
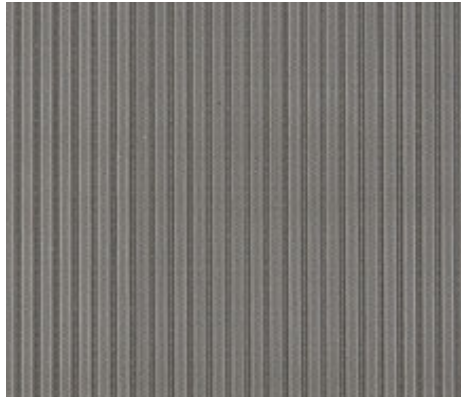
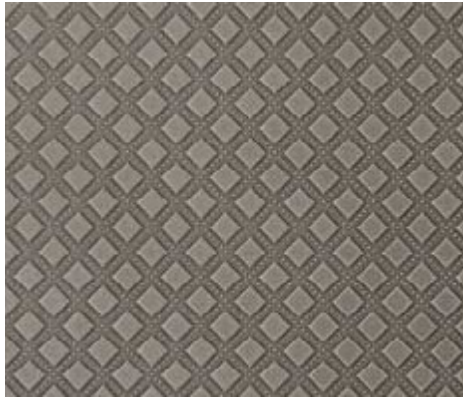
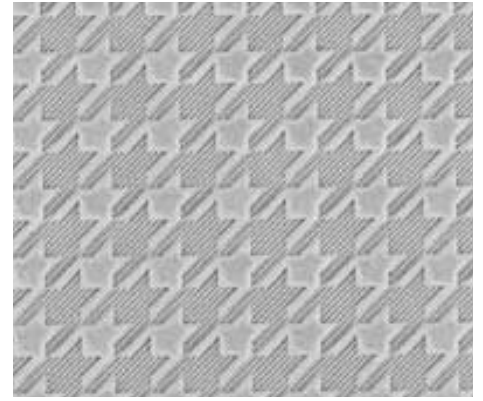
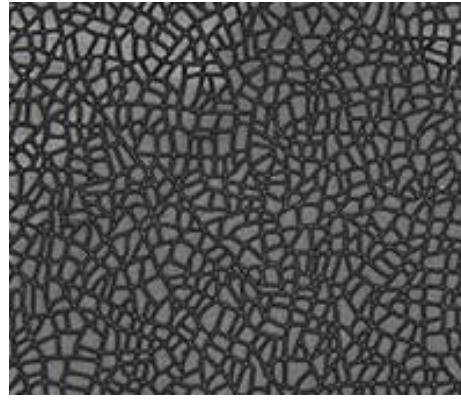
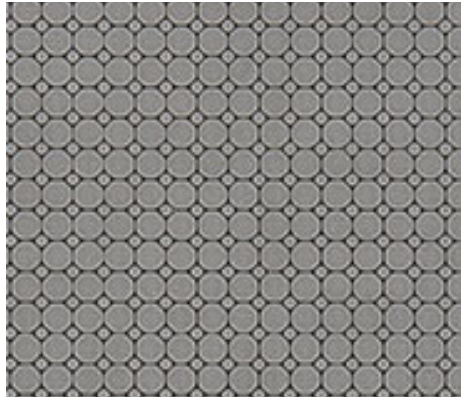
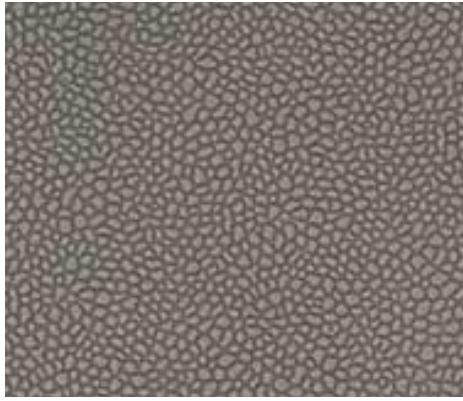
AVAILABLE PLATES: WOVEN



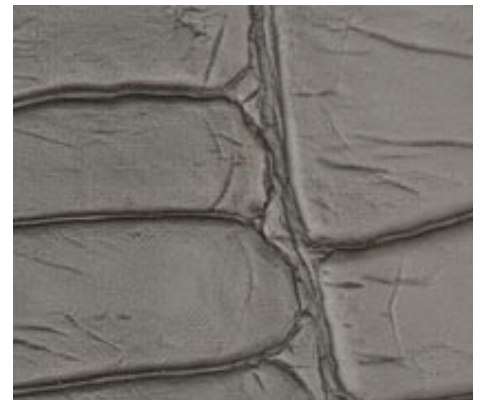
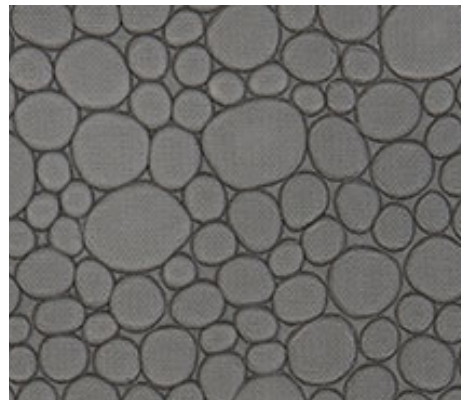
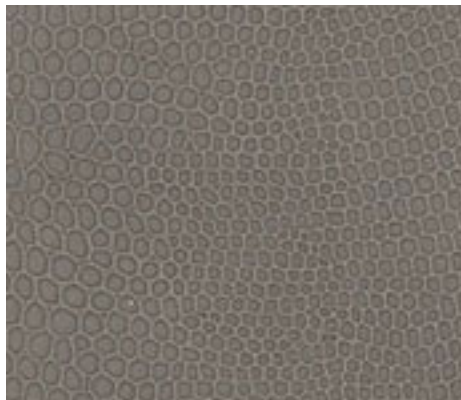
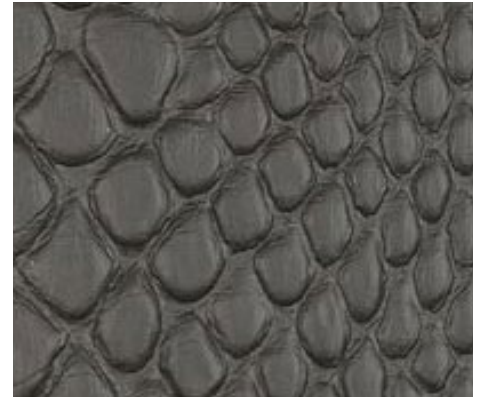
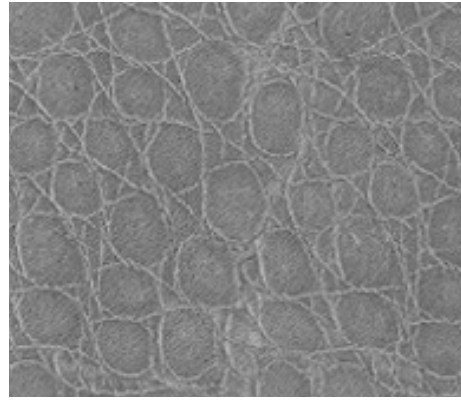
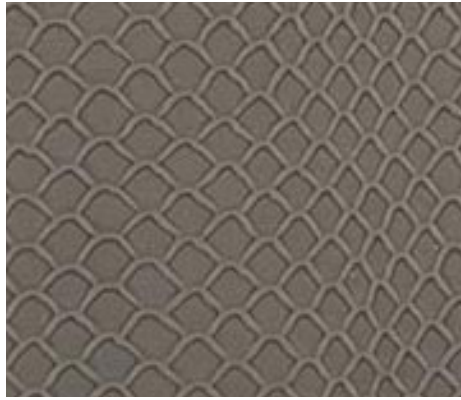
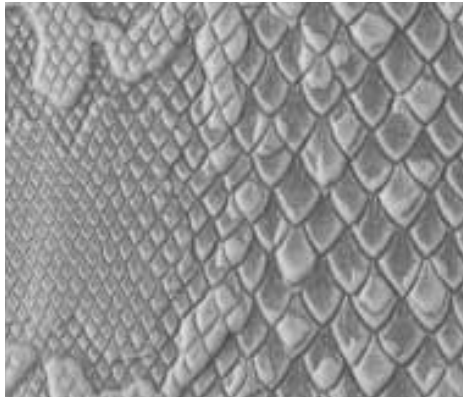
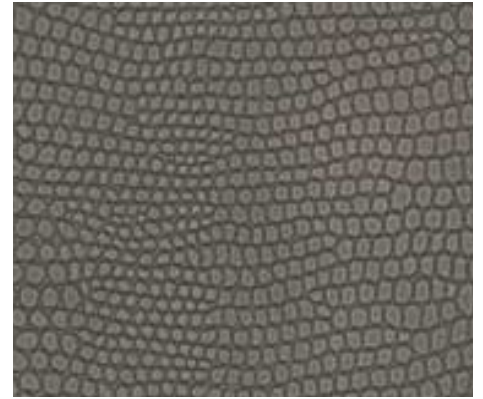
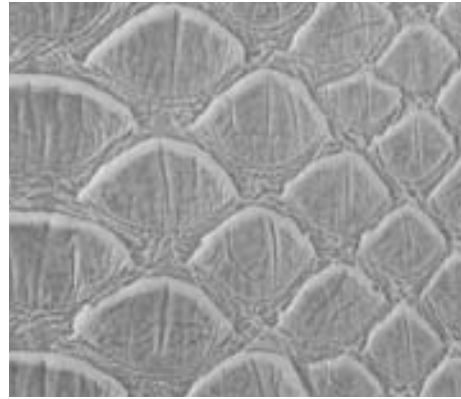
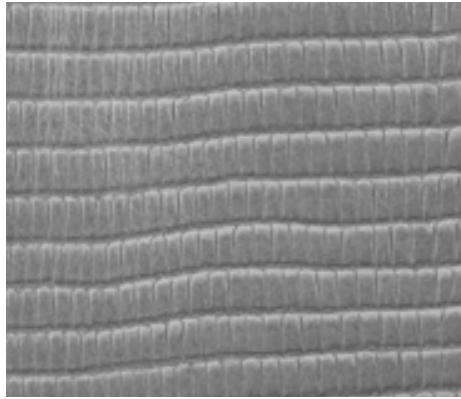
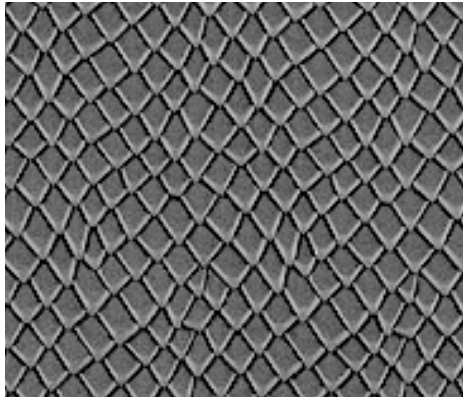
AVAILABLE PLATES: ANIMAL



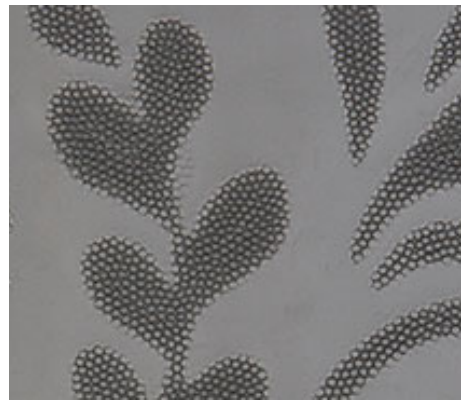
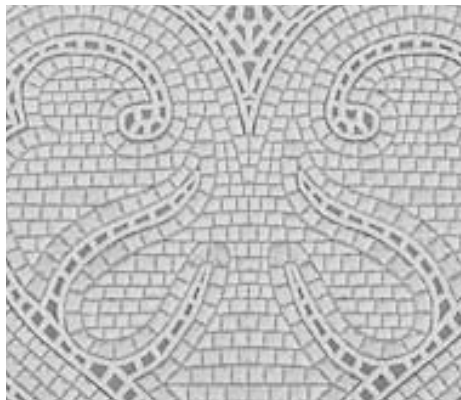
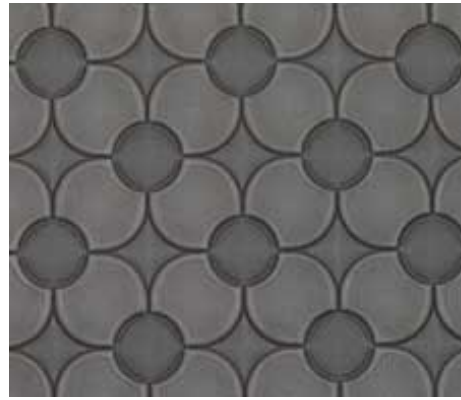
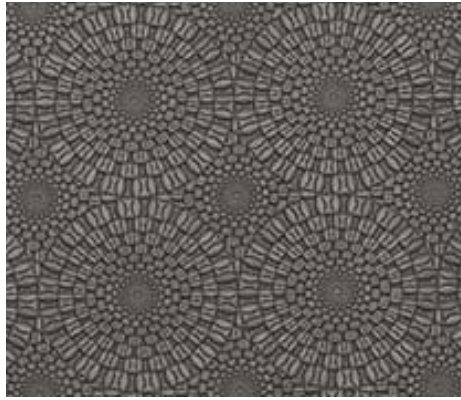
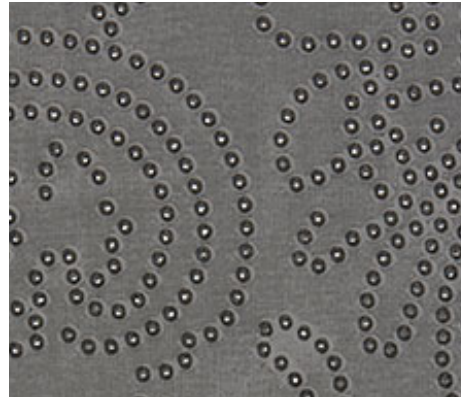
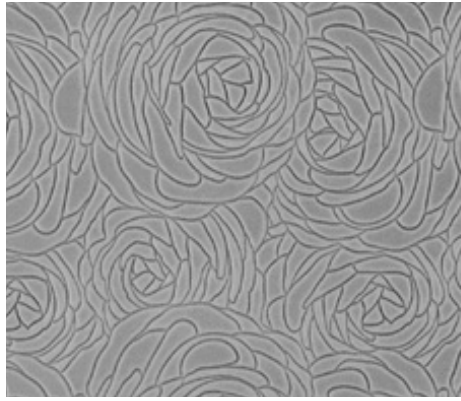
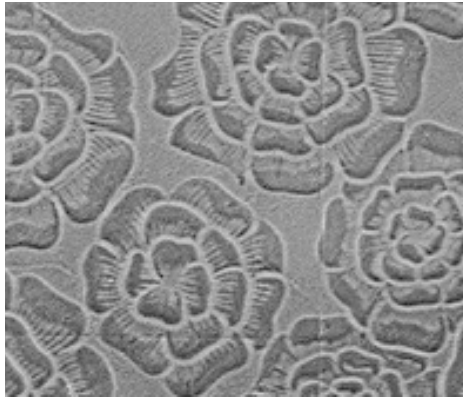
AVAILABLE PLATES: GEOMETRIC



AVAILABLE PLATES: REPTILE



AVAILABLE PLATES: FLORAL



APPLICATIONS





Whistler

LEATHER

+44 20 7352 4186

whistlerleather.com | info@whistlerleather.com

This is a natural product, the average usable area will vary depending on the size of the hide. Please use these dimensions as guidelines. An embossed leather will have platelines from the embossing process. Each hide is effectively split into 4 panels, with exception to suede hides as one panel approximate.

Available for embossing:

Almont (14sqft)

Chamonix (50sqft)

Daintree (50sqft)

Luxor (50sqft)

Tangiers (50sqft)

Verbier (50sqft)

Arnage (50sqft)

Colmar (45sqft)

Evora (50sqft)

Pueblo (50sqft)

Tuora (45sqft)

Zaragoza (50sqft)

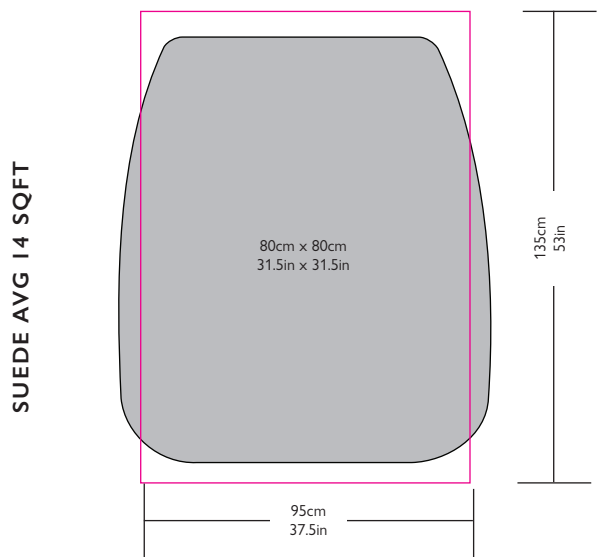
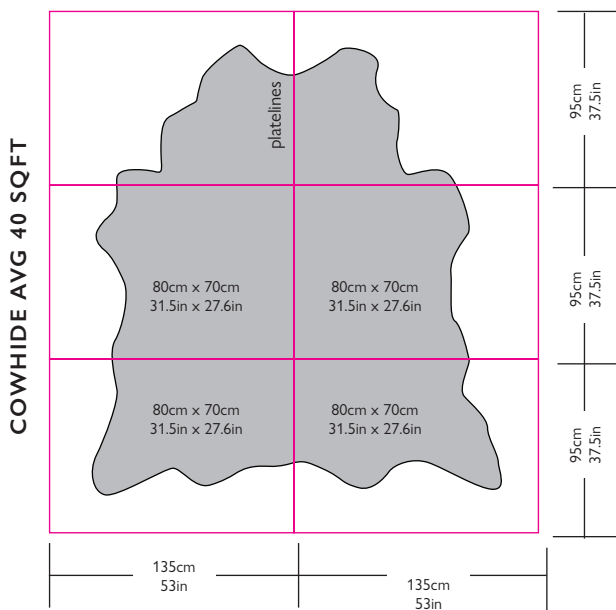
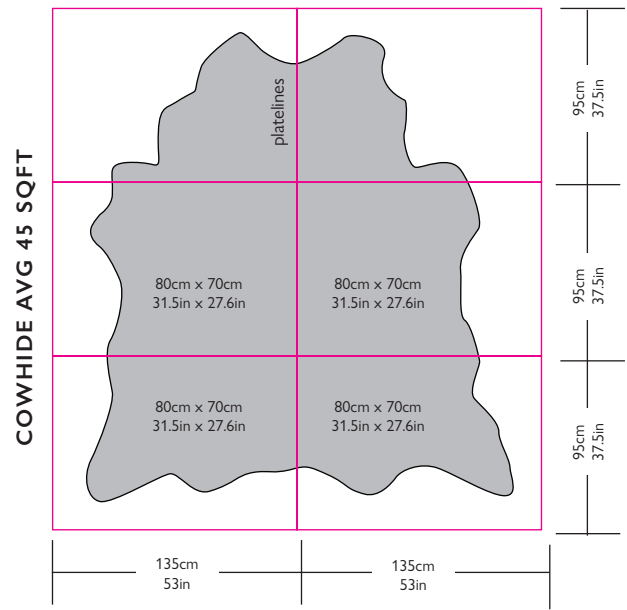
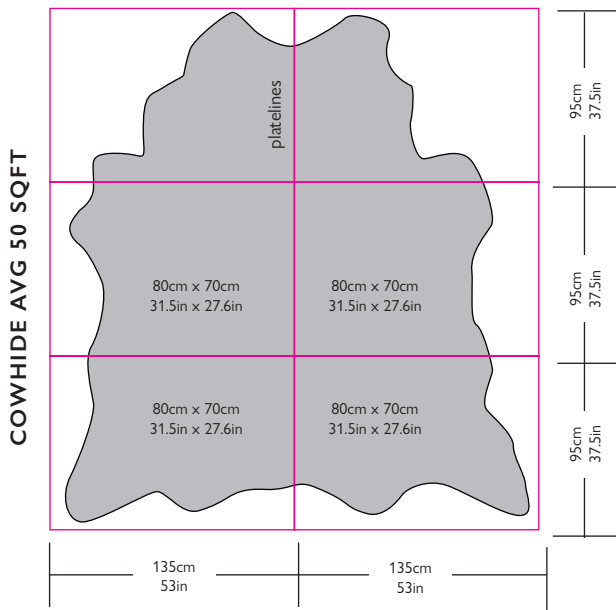
Bilbao (50sqft)

Cordoba (55sqft)

Levanto (50sqft)

Segovia (50sqft)

Venice (50sqft)

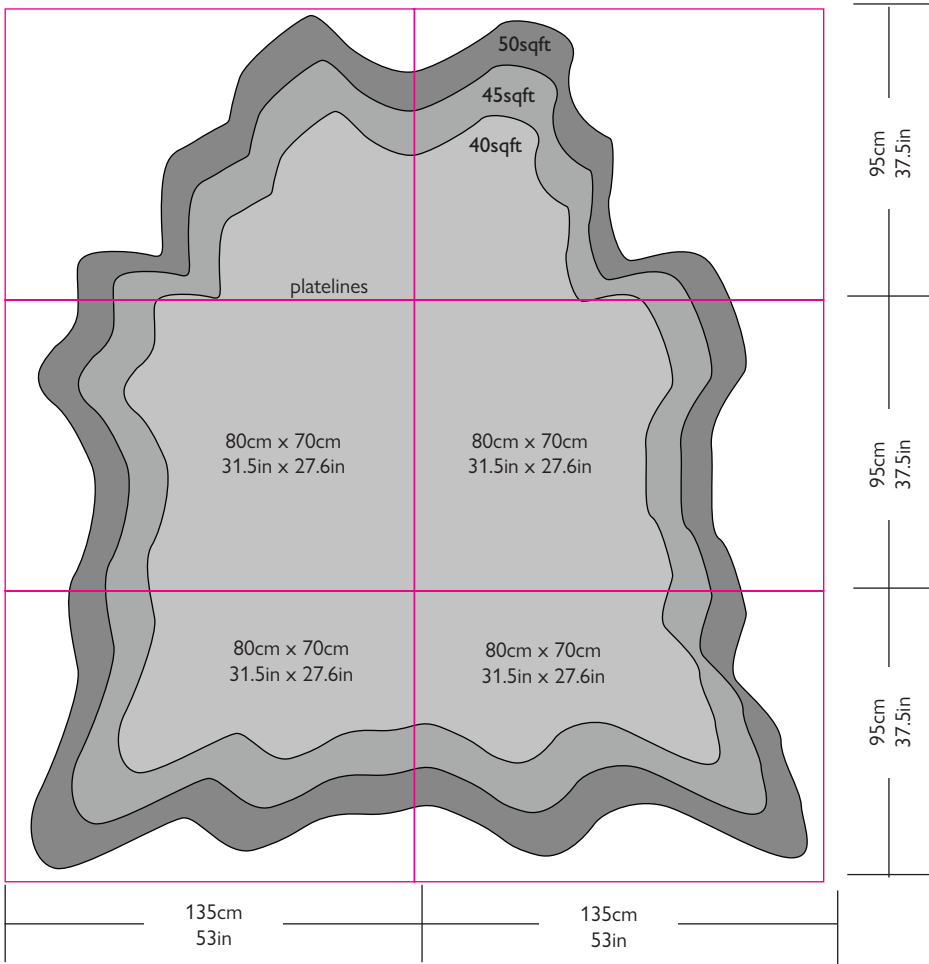


This is a natural product, the average usable area will vary depending on the size of the hide. Please use these dimensions as guidelines. An embossed leather will have platelines from the embossing process. Each hide is effectively split into 4 panels, with exception to suede hides as one panel approximate.

Available for embossing:

Almont (14sqft)	Chamonix (50sqft)	Daintree (50sqft)	Luxor (50sqft)	Tangiers (50sqft)	Verbier (40sqft)
Arnage (50sqft)	Colmar (45sqft)	Evora (50sqft)	Pueblo (50sqft)	Tuora (45sqft)	Zaragoza (50sqft)
Bilbao (50sqft)	Cordoba (55sqft)	Levanto (50sqft)	Segovia (50sqft)	Venice (50sqft)	

COWHIDES



SUEDE

